



# 2021 ANNUAL REPORT

*Helping People. Changing Lives.*

*For over 40 years...*



## Letter from the Executive Director

---

"Unprecedented" is the most overused adjective of the pandemic period. However, I'm not sure how else to describe the year we've experienced at CSC. You will find, herein, a series of infographics to demonstrate the work our amazing team has accomplished this past year, championing the trials of this time we've all been facing.

In 2021, CSC received unexpectedly high levels of funding which was paid out to local vendors and clients to cover rent and utility arrearages, supply emergency response resources for wildfire and Covid victims, and to feed hungry people in Linn, Benton, and Lincoln Counties.

While this poses opportunities to serve a greater volume of our communities, it also poses challenges on our team to grow and work quickly enough to get the funding out the door. Our dedicated team rose to both, serving more clients than ever in our history!

Our program staff have seen *unprecedented* volumes of clients. Our internal teams have recruited and on-boarded large numbers of staff continually, delivering thousands of checks and millions of dollars to our local community members.

This report will give you a feel for the resources and services received to the community through our agency. While these numbers reflect our overarching reach, it is crucial to remember the **personal impact** they represent for a single parent with young children, an individual or family experiencing homelessness, a home at risk of eviction or utility shut off, and so much more.

***This, is CSC's impact...***

A handwritten signature in blue ink, appearing to read "Peggie McGuire", is shown on a white background.

**Peggie McGuire,  
CSC Executive Director**



### AGENCY IMPACT

*2021 Program & Participant Snapshot*



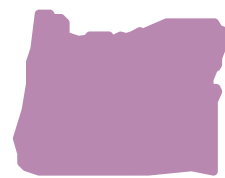
**\$17.5+**  
*million*

*total agency program  
investment*



**200+**

*other local, state, and  
federal partners*



**100+**

*local non-profit and  
shelter partners*



**\$200,000**

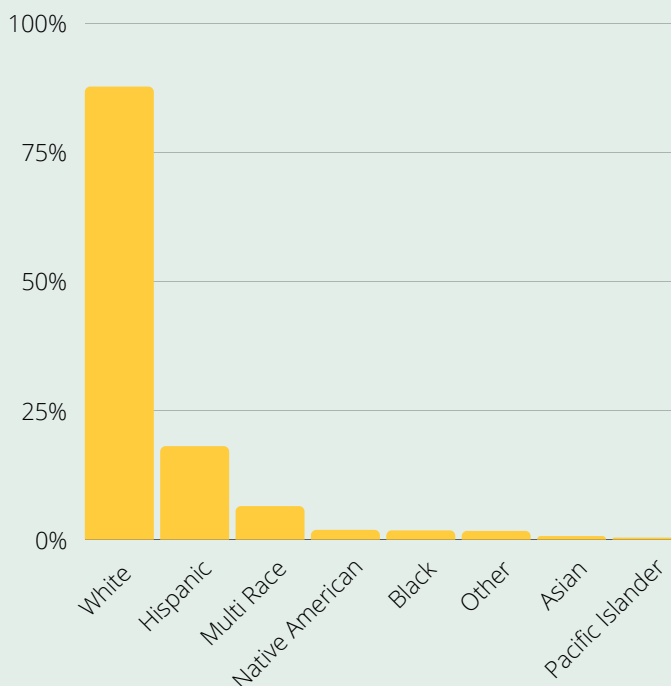
*in total community  
donations received*



**26,620**

*individuals served  
across all programs*

### RACE & ETHNICITY OF PARTICIPANTS



### HOUSING

*Eviction Protection, Homeless Services & Veteran Services*



**1,500**

*households prevented  
from eviction*



**\$14.6  
million**

*in assistance provided  
to local landlords*



**4,000**

*people prevented  
from becoming  
homeless*



**375**

*homeless individuals  
and families found  
permanent housing*



**\$4.6  
million**

*provided to partner shelters  
and organizations*



**92**

*Veterans and their  
families received  
Housing support*

Along with the above impact, CSC also partners with many local nonprofits, culturally-specific organizations, and shelters to support their services, further their missions, and expand our collaborative reach in the community.

Of the 375 homeless individuals and families CSC helped find permanent housing, **92% were still housed 6 months later!**

### ENERGY

#### Utility Assistance & Weatherization Services



**7,410**

*households served with  
utility assistance*



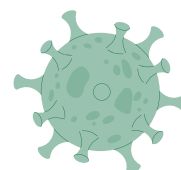
**21,827**

*individuals served with  
utility assistance*



**\$4.4  
million**

*total provided in  
utility assistance*



**\$1.1  
million**

*provided to Covid-  
impacted households*



**34**

*households received  
weatherization  
services*



**\$341,467**

*total provided in  
weatherization repairs and  
home energy improvements*



**\$10,000**

*average  
weatherization  
investment per home*

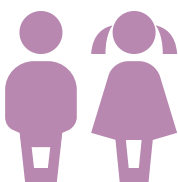
Of the 7,410 households provided with utility assistance, **16,236 individuals** were impacted, totaling **\$3.3 million** in support.

With the \$1.1 million provided to Covid-impacted households, **5,591 individuals** were impacted, comprising **1,860 households**.

The annual **energy savings** for one household that receives weatherization services can **power another home for 8 months!**

### EDUCATION & EMPLOYMENT

*Head Start, Youth, Young Adult, and Adult Programs & Services*



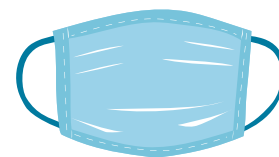
**160**

*kids enrolled in Head Start of Lincoln County*



**35**

*youth obtained a high school diploma or equivalent certificate*



**500+**

*staff, students, and families provided with PPE and COVID tests*



**120**

*youth and young adults received hands-on education*



**250**

*young adults provided career exploration and work experience*



**120**

*youth and young adults gained employment*

To further our goal of supporting the whole family, Head Start parents are considered first for hiring. In 2021, **50% of the Head Start team were parents of current or past students.**

Throughout the pandemic, we prioritized a **safe environment for students and families**; providing in-person and online classes, increasing cleaning protocols, PPE, and Covid tests, following and adapting to all local, state, and federal guidelines

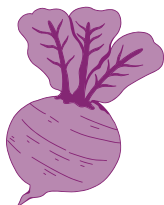
### FOOD DISTRIBUTION

*Linn Benton Food Share*



**3.5**  
million

*pounds of food  
distributed*



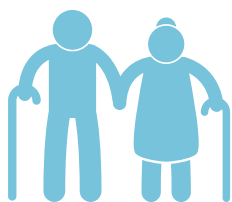
**200,000**

*pounds of locally  
grown produce  
sourced*



**260,000+**

*meals supplied to  
network food providers*



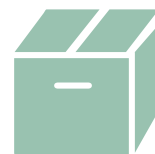
**350**

*elders served with  
monthly food box  
deliveries*



**850,000+**

*pounds saved via the  
Fresh Alliance Grocery  
Recovery Program*



**29,000+**

*emergency food boxes  
provided to partners  
and meal sites*

Linn Benton Food Share supports **56 food pantry and meal site distribution partners**.

Our Commodity Supplemental Food Program is designed for senior citizens, **saving participants \$500 annually** in food costs that they can put towards rent, medications, and other life essentials.

### EMERGENCY & RELIEF

*Wildfire & Covid Services*



**2+**  
**million**

*for communities still  
impacted by the 2020  
wildfires*



**\$248,000**

*provided to support  
displaced families  
and individuals*



**22**

*jobs provided to  
dislocated residents  
impacted by wildfires*



**16**

*displaced households  
moved into safe,  
permanent housing*



**2,500**

*underserved individuals  
received Covid vaccines*



**\$15+**  
**million**

*invested in emergency  
services for bills and  
household goods*



**50+**

*vaccine outreach events  
targeting underserved  
populations*



**1,000+**

*COVID-positive  
individuals received  
financial assistance*

**Wildfire relief services** were in response to the Beachie Creek, Lion's Head, P-515, and Echo Mountain fires impacting Santiam Canyon and North Lincoln County. CSC crew leaders continue to direct the response team helping restore the Breitenbush River and Northern Linn and Marion County forests and watershed areas to pre-fire conditions.

**Equity-based Covid vaccine** outreach included individuals who were unhoused, LatinX, BIPOC, and living rural communities.

### PARTNERSHIPS

*Vital Community Organizations*



**\$4.6**  
million

*total grants awarded  
to our partners*



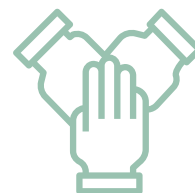
**\$2.2**  
million

*in housing grants  
awarded*



**\$2**  
million

*in shelter  
grants awarded*



**10**

*total local  
organizations awarded*

Our ongoing monetary and collaborative support with partners reaches far more community members and makes an even larger impact in addition to what is in this report.

### PARTNER SUPPORT SNAPSHOT

**Jackson Street Youth Services** received **\$82,110** for shelter services and outreach to youth experiencing homelessness in Linn, Benton, and Lincoln Counties. In 2021, 175 youth were served by Jackson Street.

**Corvallis Daytime Drop-In Center** received **\$176,638** to coordinate street outreach to the unhoused of Benton County including data collection and assessments for those seeking connection to housing services. With this funding, 194 individuals were served.

**Corvallis Housing First** received **\$638,669** for street outreach and case management to shelters in Benton County and to upgrade their new facility which provides 25 shelter units, a former motel in south Corvallis. CHF housed and provided ongoing case management services to 8 chronically homeless individuals in the only federally funded permanent supportive housing program in the region.

### PARTNER SUPPORT SNAPSHOT

*continued...*

**Unity Shelter** received **\$1,306,360** for shelter operations in Benton County including the Corvallis Men's Shelter, Room at the Inn (women's shelter), Safe Place, and micro-shelters. Services also included case management, a hygiene station, meals, and other basic needs to the unhoused at the new south Corvallis location during the height of the pandemic. In 2021, 75 individuals found safe shelter with Unity, and many others were assisted with basic needs

**C.H.A.N.C.E.** received **\$1,626,725** to operate motel sheltering in Linn, Benton, and Lincoln Counties at a time when congregate shelters were forced to reduce their capacity due to Covid-19 social distancing requirements. In 2021, C.H.A.N.C.E. sheltered 475 people in local motels, including 88 children who would have otherwise been living on the streets.

**C.H.A.N.C.E.** took over operation of an Albany shelter formerly known as Signs of Victory, preventing the closure of this vital facility while improving the conditions and services for the residents staying there. The shelter, now aptly renamed **Second Chance**, was awarded **\$505,235** for shelter operations and staffing. In 2021, 92 people were sheltered at Second Chance.

**NW Coastal Housing** received **\$100,000** to assist in their efforts to turn a Lincoln City motel into a transitional shelter, Coastal Rising Phoenix, for wildfire survivors and other vulnerable unhoused community members in Lincoln County. The shelter offers 41 rooms to those referred by local social service providers who provide case management and support while they seek permanent housing opportunities.

**Corvallis Housing First** and **NW Coastal Housing** each received **\$100,000** in supportive funding for the development of Project Turnkey motels, providing new shelter opportunities in Lincoln and Benton Counties.

## PARTNERING FOR PROGRESS

### *Local Collaborations to Build Our Community*



Through numerous partnerships with local farms, **Linn Benton Food Share** receives hundreds of thousands of pounds of donated excess food. This generous support makes a BIG impact on the quality and quantity of food LBFS is able to provide to the community. LBFS also contracts with farms to order local, high quality produce in our regular distribution.

Through the **Fresh Alliance Grocery Recovery Program**, LBFS recovered over **850,000 lbs of food** that would have otherwise gone to waste, and distributed it to our network of food pantries and meal sites. Participating stores included local branches of Trader Joe's, Winco, Fred Meyer, Safeway, Natural Grocers, Costco, Walmart, Target, and Grocery Outlet.



CSC partners with local **culturally-specific organizations** to support their missions and expand the reach of our collaborative services to meet populations in our community in trusted environments aligned with their cultural and language needs. Partners include the Linn Benton NAACP branch, Centro de Ayuda (Lincoln County), Olalla Center (Lincoln County), Casa Latinos Unidos (Linn & Benton Counties), and more!

## HELPING PEOPLE. CHANGING LIVES.

### *Testimonials from Participants*



I don't have the words to describe my relief right now. My beautiful human can feel safe thanks to the support of your team! I thank the powers that be that led you into the position of supporting our communities with **such compassion and grace!**

- Travis S. & Child

With Covid affecting everyone, CSC has given us, here at North Santiam Gleaners, an opportunity to give to others **a feeling of safety and security**. With CSC's efforts, we have been able to put food on everyone's table. When a person is not hungry they can forget some of the troubling times around them. **CSC has been there to help all those in need.**



- Tom M.



**Your patience, knowledge, and prompt response to meet my needs** without making me feel "less than" meant more than I could ever say. Thank you from the bottom of my heart. You are all exactly where you need to be because you're helpful, kind, and full of encouragement. You all are truly amazing. You **serve this community very proudly**. Thank you.

- Jacqueline O.

We were in a dire financial situation, and someone suggested CSC for rental assistance. The person I spoke with was **kind and considerate** and helped my family out, she also suggested Love Inc. for hygiene products. The next day I called Love Inc., and I was referred to Marys River Gleaners. I was welcomed by this group and they embraced my family. I am now the current co-manager of Philomath Gleaners and I have seen the good that the groups at CSC accomplish.



- Patty N.



I just wanted to say thank you so much for helping me get caught up on my electric bill and some credit for upcoming bills. That's **beyond what we were expecting**. It is so appreciated and we are so grateful for you guys!

- Tiiffany I.

I would just like to say that your agency and **what you all do is amazing!** You have no idea the **impact** your services have had on my family. We will be forever grateful.



- Suzanna G.

# ***Thank you!***

---

Our accomplishments and impacts would not be possible without the generous support of our community. In 2021, we received **over \$200,000 in donations** from local community members! This helps us keep more people in our community safe, housed, fed, and healthy.

Help us continue to make an **IMPACT** in our community!

To donate online, **[click here](https://givebutter.com/csc-donate)** or visit [givebutter.com/csc-donate](https://givebutter.com/csc-donate)

To donate by check, mail to:

*Community Services Consortium  
250 Broadalbin Street SW, Suite 2A  
Albany, Or 97321*

*Please make checks payable to Community Services Consortium*

