



2022 ANNUAL COMMUNITY IMPACT REPORT

Helping People. Changing Lives. For over 40 years...



Letter from the Executive Director

2022 marked our 42nd year serving Linn, Benton, and Lincoln Counties! We have experienced a myriad of up's and down's over those four decades, but every year one thing has remained constant, our commitment to *Helping People. Changing Lives.*

Last year, we engaged in new programs and partnerships to expand our reach and adapt to the changing needs of our region, such as a young adult wildfire fuel reduction program to keep our communities safe.

This is in addition to our regular suite of services, including education from preschool to PhD, job training, housing, utility assistance, home weatherization, food assistance, and more. This report will give you a look into the impact from all those programs, services, and collaborations.

While the data reflects our overarching reach, it is pivotal to remember the *personal impact* it represents. For a single parent with young children at risk of eviction now in stable housing. For youth who have faced countless barriers now able to envision and achieve their educational and career goals.

This, is CSC's impact.

A handwritten signature in blue ink, appearing to read 'Pegge McGuire', written over a light blue grid background.

Pegge McGuire
CSC Executive Director



IMPACT SNAPSHOT



\$18.7
MILLION

TOTAL COMMUNITY
INVESTMENT



54,550

individuals impacted
across all services



36,330

households served
across all programs



*This could fill Oregon
State University's Reser
Stadium **two times!***



20%

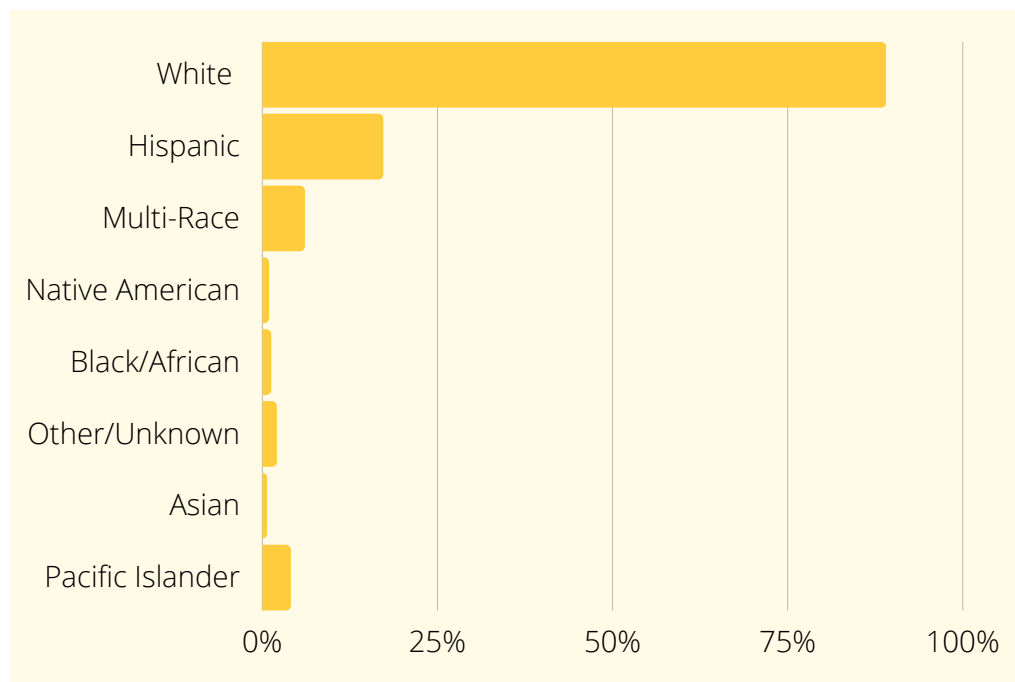
of participants identify as
having a disabling
condition



5%

of all participants are US
Military Veterans

RACE & ETHNICITIES OF INDIVIDUALS SERVED



HOUSING

Eviction Protection, Homeless Services & Veteran Services



975

*households prevented
from eviction*



40%

*of households served
had an average of 5
people in them*



2,394

*individuals prevented
from eviction*



**\$3
million**

*provided to partner shelters
and organizations*



465

*homeless individuals
served, 93% found
permenant housing*



112

*Veterans and their
families received
Housing support*



**\$4.6
million**

*in assistance provided
to local landlords*

DID YOU KNOW?

We also provide RentWell tenant education courses for those experiencing homelessness or having difficulty renting due to bad credit, criminal record, rental history, and more.

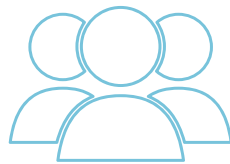
ENERGY

Utility Assistance & Home Weatherization



9,111

*households served with
utility assistance*



12,235

*individuals served with
utility assistance*



\$6+
million

*total provided in
utility assistance*



100

*households received
weatherization
services*



\$5,800

*average home
weatherization
investment*



\$573,188

*total provided in home
energy repairs and
improvements*



\$7
million

*invested by CSC to
reduce energy burden
in our communities*

DID YOU KNOW?

The total energy savings from Weatherization services in 2022 could power NINE homes for over a YEAR!

EDUCATION & EMPLOYMENT

Comprehensive services promoting exploration, goal setting & stability



2,795

total served in education & employment programs



\$463,000

invested in paid work experience



\$5.4 million

Invested in employment support services



70

scholarships provided for post-secondary education



530+

individuals provided job readiness training



200+

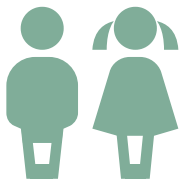
individuals provided transportation assistance

DID YOU KNOW?

Education includes *all levels* - career exploration, skill-building, earning GEDs, and supporting people on their path to post-secondary education for degrees, certificates, technical training programs, CDLs, and more.

HEAD START OF LINCOLN COUNTY

Free Preschool for Children Ages 3-5



180

kids enrolled in Head Start of Lincoln County



180

kids received meals and school supplies in the classroom and at home



180

kids received home visits to provide holistic, supportive services to families



120

*Head Start students received free dental screenings, 40 resulted in **free** dental services*



174

Head Start students received free immunizations



140

Head Start students received free physicals and vision screenings

DID YOU KNOW?

Daily meals and snacks provide a minimum of 1/3 children's daily nutritional needs! For over 55 years, this national program has served students with a "whole child approach", taking into account each child's cultural, health, mental, and social needs.

FOOD DISTRIBUTION

Linn Benton Food Share



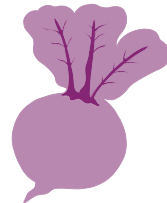
3.5
million

*pounds of food
distributed*



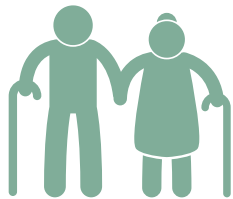
320,532

*meals supplied to
network food sites*



178,000

*pounds of produce
sourced from local farms*



412

*seniors served with
monthly food boxes*



40,304

*emergency food
boxes supplied to
network food sites*



700,000+

*pounds saved with the
Fresh Alliance Grocery
Recovery Program*

DID YOU KNOW?

Our **Commodity Supplemental Food Program** is designed for senior community members, saving them \$500 annually in food costs that they can put towards rent, medications, and other life essentials.



68

*local food pantry
and meal site partners*

EMERGENCY & DISASTER RECOVERY

Helping communities recover from and prepare for natural disasters.

In addition to ongoing services for those affected by the 2020 wildfires, we launched a new program in 2022, **Wildfire Fuel Reduction**. In partnership with Oregon Conservation Youth Corps and Oregon Department of Forestry, this program provides training and certifications to youth and young adult participants to perform work in the forests of Linn, Benton, Lincoln, and Polk Counties to reduce the risk of future wildfires. All participants receive career exploration coaching, many of them focusing on wildland firefighting and natural resource fields.



26

youth & young
adult participants



\$350,000

invested into local
wildfire prevention efforts



2,900

hours invested into
wildfire prevention efforts



2022

Volunteers of the Year!
Awarded by Greenbelt
Land Trust to Linn
County crews



PARTNERING FOR PROGRESS

360+
PARTNERS

including nonprofits, shelters, educational institutions, governments, faith-based organizations, and more!



Highlighting key collaborations that cultivate equity, belonging & stability in our community:



Keys For The Culture: A BIPOC-Centered Housing Festival
(Now Keys for the People) in collaboration with the Linn Benton NAACP Branch and the City of Corvallis.

This BIPOC-centered housing event was the first of its kind in our region, now an annual event by popular demand. Featuring opportunities to hear from local housing experts and innovators in housing equity, refreshments from BIPOC-owned small businesses, giveaways, kid's activities, and more.

Community Action Advisory Council, working hand-in-hand with real community members and local organizations.

Our community advisory board oversees and supports our work and strategic direction. A key piece of this board are regional culturally-specific organizations, who we partner closely with to better reach and impact more of the communities we mutually serve, as well as advise our equity work. This includes: **Linn Benton NAACP, Casa Latinos Unidos, OSU faculty, and many more.** *Thank you.*



PARTNERING FOR PROGRESS



The impact of our funding reaches far beyond the direct assistance offered through our suite of programs. Each year, we provide **local housing and shelter partners** with funding to support and uplift their unique initiatives and reach. Some of those in 2022 included:

Jackson Street Youth Services

Youth shelter supports and outreach to youth experiencing homelessness in Linn, Benton, and Lincoln Counties.

Unity Shelter

Emergency motel sheltering for families, individuals and the medically fragile experiencing homelessness.

NW Coastal Housing

Supports for those experiencing homelessness while they seek permanent housing opportunities.

Corvallis Housing First

Permanent supportive housing, street outreach, and case management for shelters in Benton County.

C.H.A.N.C.E.

Motel sheltering for individuals and families who would otherwise have been living on the streets.

Corvallis Daytime Drop-In Center

Coordinating street outreach in Benton County, including data collection and assessments.

HELPING PEOPLE. CHANGING LIVES.

Testimonials from Participants



We're grateful we got the help to be able to have a warm home to come back to, and the money we work for is able to go towards other bills. And most of all we are grateful for being **treated with respect and kindness**. Thanks for the assistance, it helps us every single day.

- Emily & Steven

Your help has **saved me from a very real threat of homelessness**. In a time when so many ARE homeless, you stepped in and made all the difference in my life, for which I and my service animals are eternally grateful.



- Anonymous housing client



I am a single mom of 6 and I normally work 50+ hours a week. I am so very fortunate to have been able to connect with you. Not only was I assisted beyond anything I could imagine, **I was also given a sense of relief**. Thank you! From the very bottom of my heart!

- Suzanna

When I reached out to CSC for energy assistance, I couldn't have felt more understood. Each and every staff member **treated me with understanding, dignity, and concern**. You all are so appreciated by me and my daughter.



- Jacqueline



At CSC, I found all the help I needed and more. The hurdles they helped me jump that led to my accomplishments **changed my whole life**.

- Fred

The now lifted weight of housing insecurity that once loomed over me has relieved me to be able to invest in my spirit to better the lives around me. In such uncertain times, this is **the best possible gift I could receive**.



- Marcella

Help us continue ***making an impact***



DONATE ONLINE

Click the link or scan the QR code
givebutter.com/csc-donate



TEXT TO DONATE

Text ***"CSC" to 53-555***



DONATE BY CHECK

Community Services Consortium
250 Broadalbin Street SW, Suite 2A
Albany, Or 97321

Please make checks payable to Community Services Consortium

